

SEMICON[®]
KOREA 30
YEARS

FEB 8-10, 2017
Hall A•B•C•D, COEX, SEOUL

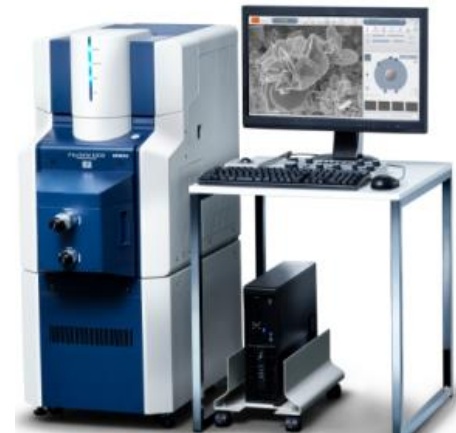
CONNECT

2017년 30회를 맞아 역대 최대 규모로 개최될 세미콘 코리아의 히타치 부스에 방문해 주세요. 이번 전시에는 컴팩트 하면서도 고성능을 자랑하는 FlexSEM1000, Milling Time이 2배 빨라진 IM4000plus, 작지만 강한 AFM5100N이 모두 실기로 전시, 데모를 진행할 예정으로, 히타치의 최신 기술을 눈 앞에서 접할 수 있는 좋은 기회입니다.

또한, IoT & Power Device 제조 도구와 최신 제조 공정, 계측 및 검사 도구, 응용 기술 등도 소개할 예정이오니, 많은 관심 부탁드립니다.

문의사항 있으신 분은 하기 메일로 연락 부탁드립니다.

·문의처: joosung.kang.yz@hitachi-hightech.com



[Scanning Electron Microscope FlexSEM 1000](#)

일시

2017년 2월 8일 (수) - 10일(금)
10:00 - 17:00

장소

서울 코엑스 HALL A~D

[Advanced High Resolution CD-SEM CG6300](#)
[Advanced High Voltage CD-SEM](#)
[Review SEM RS6000 Series](#)
[Wafer Surface Inspection System LS9300 Series](#)
[Conductor Etch System 9000 Series](#)

Hitachi HighTech

입장료

무료(2/1까지 사전등록자에 한해)

※사전등록: <http://www.semiconkorea.org/ko/registration>

주최

SEMI (Semiconductor Equipment and Materials International)



SEMICON[®]
KOREA **30**
YEARS

FEB 8-10, 2017
Hall A•B•C•D, COEX, SEOUL

CONNECT

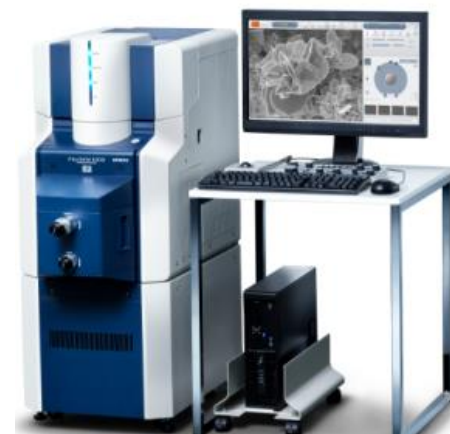
We are pleased to invite you to the Hitachi booth at the forthcoming SEMICON Korea 2017. It is a wonderful opportunity for you to grasp our latest technologies on versatile SEMs especially featuring FlexSEM 1000, the new compact Variable Pressure SEM.

FlexSEM 1000 VP-SEM combines innovative technological features with an intuitive interface, to deliver adaptability and flexibility in a powerful, automated, lab-friendly package.

The FlexSEM 1000 will change your view of electron microscopy!

And another showcases the IoT & power device manufacturing tools and the latest manufacturing process, metrology, and inspection tools, application technologies. We are looking forward to meeting you at our booth.

We are going to make a demonstration in SEMICON KOREA Hall(2/8~10)



For inquiries, contact:

[Scanning Electron Microscope FlexSEM 1000](#)

Admission

Free of charge(Only for pre-registration)

※ Visitor Registration: <http://www.semiconkorea.org/en/attend/registration>

Dates

FEB.8 (Wed) - 10 (Fri), 2017
10:00 - 17:00

Venue

HALL A~D COEX
Seoul, Korea

Organized by

SEMI (Semiconductor Equipment and Materials International)

[Advanced High Resolution CD-SEM CG6300](#)

[Advanced High Voltage CD-SEM](#)

[Review SEM RS6000 Series](#)

[Wafer Surface Inspection System LS9300 Series](#)

[Conductor Etch System 9000 Series](#)



Hitachi High-Tech